

IRS & HCC

Definition

Instant Replay System (IRS) is the system whereby the referees can review the defined play situations by the rules and decision only if they find clear and conclusive visual evidence to do so.

In all games where the Instant Replay System (IRS) is applied the head coach may request one head coach's challenge, i. e. ask the referees to verify their decision by using the IRS to review the game situation.

From this season onwards IRS is also obligatory in all venues.

IRS & HCC

When to use

For the HCC,
All play situations
may be used
during the whole
game!

6 - Anytime during the game

2 or 3
POINTS

2 or 3
FREE THROWS

PF, UF, DQF
Up- or
Downgrade

TIME
GAME &
SHOT CLOCK

IDENTIFY
FREE-THROW
SHOOTER

IDENTIFY
FIGHT or
VIOLENCE

5 - End of quarter / overtime

SHOT
EQ OR EOG

OUT-OF BOUNDS
VIOLATION of
the SHOOTER

SHOT CLOCK
VIOLATION of
the SHOOTER

8 SEC
VIOLATION of
the SHOOTER

FOUL
EQ OR EOG

4 - Last 2 minutes, 4th quarter / overtime

SHOT CLOCK
VIOLATION

SHOT vs FOUL
OFF BALL

OUT OF
BOUNDS

GOALTENDING &
INTERFERENCE

IRS

Protocol



IRS & HCC

IRS always first

5.7 IRS: REVIEWS AND TIME-OUT REQUESTS



1



2



3



4



5

The referees shall keep both teams on the playing court at the end of a quarter if the IRS is to be used.

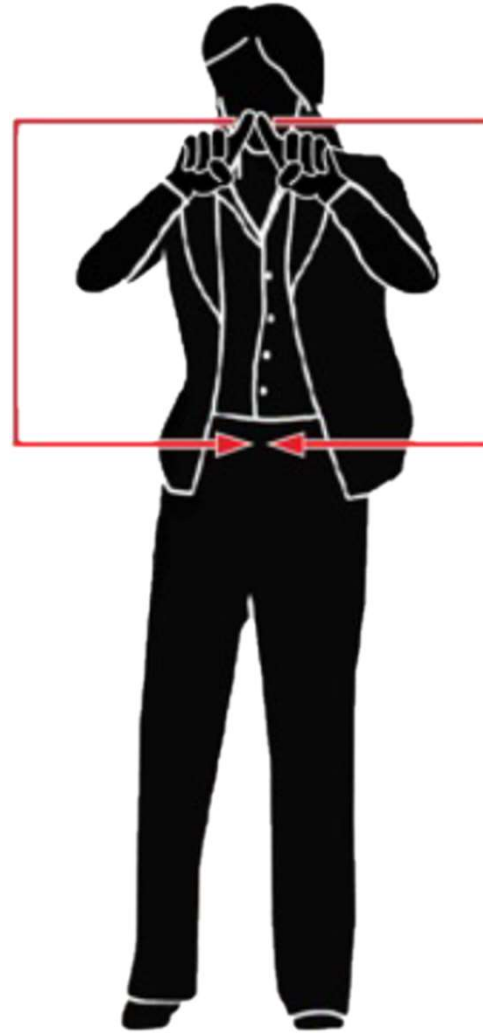
HCC

procedure

- 1) The head coach makes visual contact with the nearest referee
- 2) The head coach says loudly in English "challenge" and shows the correct signal
- 3) The request must be made
 - a) at the time the game is stopped after the decision to be challenged, that is the same game stoppage.
 - b) if the play is not stopped (2 or 3 points / Shot Clock Violation / Act of Violence) at the latest when the referees have stopped the game for the first time after the decision.
- 4) The Head Coach indicates the situation to be reviewed to the nearest referee

HCC

procedure



HCC

procedure

- 5) Referees confirm the requested challenge is valid and the head coach's challenge is granted by the Crew Chief showing the correct signal to the scorer's table
 - a) The nearest referee to the Head Coach informs other referees which situation has been challenged.
 - b) Referees double check with each other (if necessary) the challenge is valid (according to the rules)
 - i) If the situation is reviewable, the Crew Chief confirms the challenge to the scorer's table by showing the correct signal. *(continue with step 6.)*
 - ii) If the situation is not one of the reviewable play situations, the challenge is not granted.
- 6) Referees use the normal IRS Review Protocol to review the play situation
 - a) If the challenge is successful, the initial decision is overturned
 - b) If the challenge is not successful, the initial decision remains valid
 - c) Game shall be resumed as after any IRS review

HCC

procedure

